

Tutorial: Profile and Dashboard Reports

Profile and Dashboard Reports

- Collections of data about a county or the state
- Focused specific topics, geographies or populations

Community Health Assessment Resource Tool Set
Powered by Florida's Bureaus of Community Health Assessment and Vital Statistics

Search

CHARTS Login
Create your CHARTS account to instantly view your county's data and receive CHARTS update notices.
[Log In/Sign Up](#)

Community Tools
Life Expectancy
Community Map
Social & Economic Factors

Profiles & Dashboards
Health Summaries
Injuries
Social and Behavioral Health
Specific Focus

Health Indicators
Topic Areas
Chronic Diseases
Environmental Health

Current Features
Profiles & Dashboards
Health Summaries
Injuries
Social and Behavioral Health
Specific Focus

Focus On
The Centers for Disease Control and Prevention (CDC) defines **mental health** as our emotional, psychological and social well-being.

What's New
Data for eight environmental health protection indicators have been released for 2022.

Quick Facts
In 2021, there were 15,567 deaths and 73,175 hospitalizations from stroke.

Community Spotlight
[DOH-Bay Provides Preventive Dental Services to Incarcerated Juveniles](#)

Estimated Births
*Since Jan 01, 2023
86279

Profiles

Contain four components that describe the health status of a county.

1. Indicators — important health measures
2. Quartiles — compare counties to one another
3. County data — count or rate
4. State data — compare the county to the state

Pregnancy and Young Child Profile, Alachua County, Florida

Select County: Alachua 1
Select Year: 2021 2
3
4

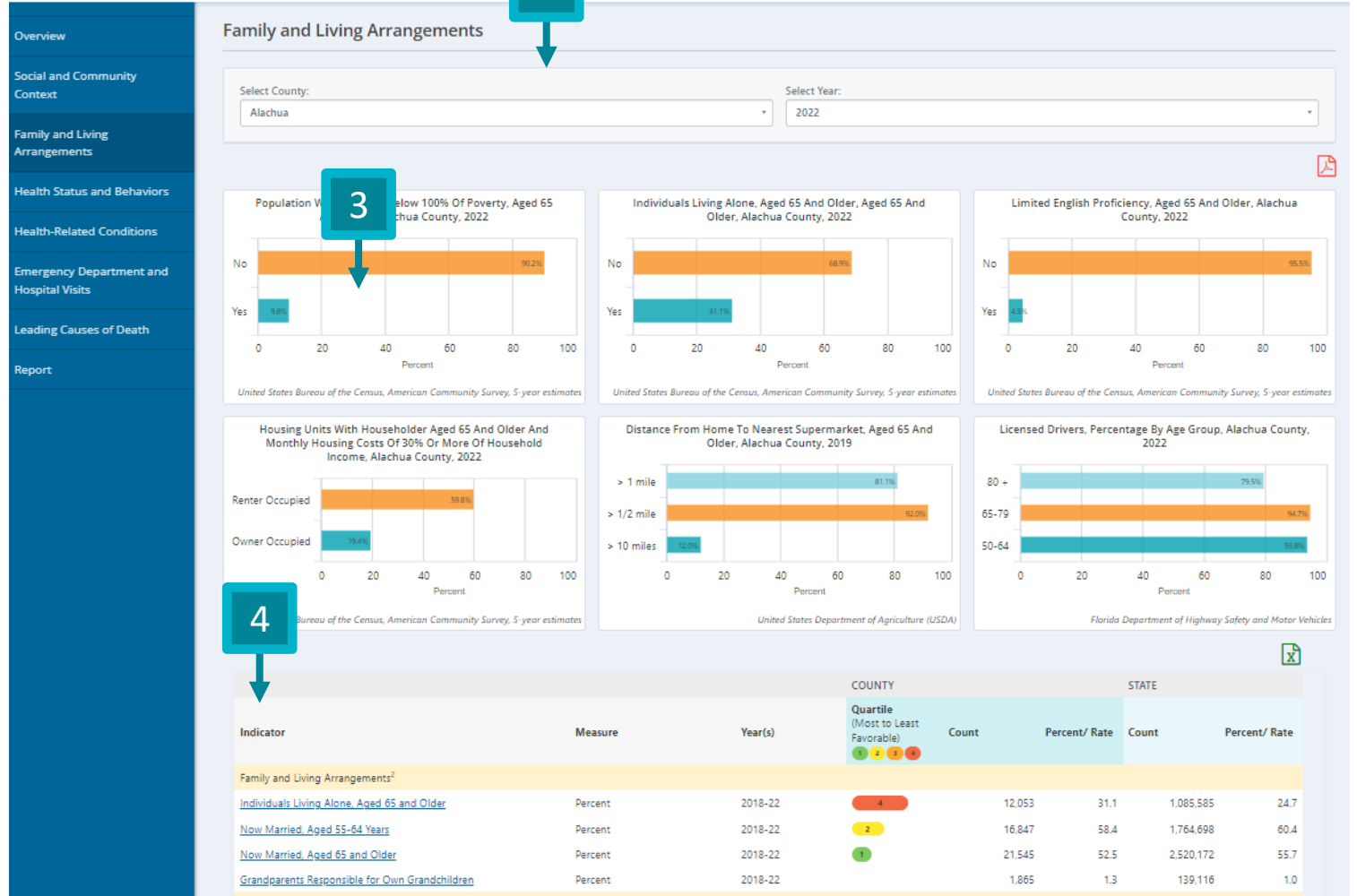
Indicator	Rate Type	Year(s)	Quartile (Most to Least Favorable) 1 2 3 4	County Number	County Rate	State Comparison
Community Characteristics						
Population	Count	2021		275,435		
Median household income (in dollars)	Dollars	2017-21		\$53,314		
Individuals below poverty level	Percent	2017-21	4	52,902	20.1	13.1
Individuals 18 below poverty level	Percent	2017-21	2		18.1	18.2
Civilian labor force which is unemployed	Percent	2017-21	2	6,681	4.8	5.3
Owner-occupied housing	Percent	2017-21	4		55.1	66.5
Domestic violence offenses	Per 100,000 population	2018-20	3	4,665	582.5	495.9
Population 5+ that speak English less than very well	Percent	2017-21	3	9,525	3.6	11.8
Population that speak Spanish among Population 5+ that speak English less than very well	Percent	2017-21	1	3,738	39.2	77.9
Births covered by emergency Medicaid	Percent of births	2019-21	2	82	1.0	3.1
Women of Childbearing Age						
Total female population ages 15-44	Count	2021		69,929		

1

2

Dashboard

1. Left menu – allows navigation between pages within the dashboard
2. County and Year selection
3. Data visualizations – data displayed as graphs
4. Data table – county and state data, like a profile report



Features of a Report: Quartiles

- A number from 1-4
 - 1 is most favorable
 - 4 is least favorable
- Calculated by ordering percentages/rates from most to least favorable and dividing the list into four groups

Benefits

- For a single indicator, compare data for a county to another
- Assess strengths (1st quartile) and opportunities (4th quartile)

Weaknesses

- Additional information is needed to differentiate between counties within the same quartile



1st Quartile
(Most Favorable)



2nd Quartile
(More Favorable)



3rd Quartile
(Less Favorable)



4th Quartile
(Least Favorable)

Quartile Maps

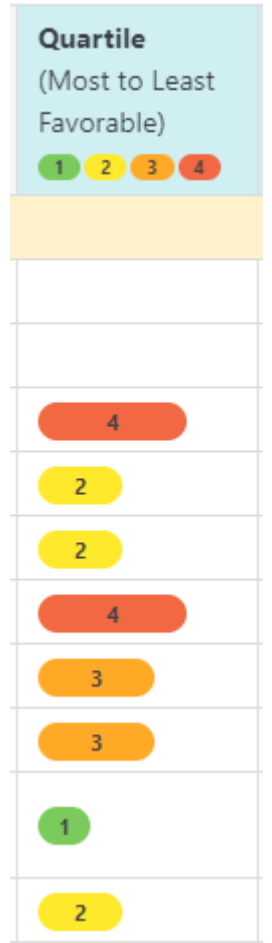
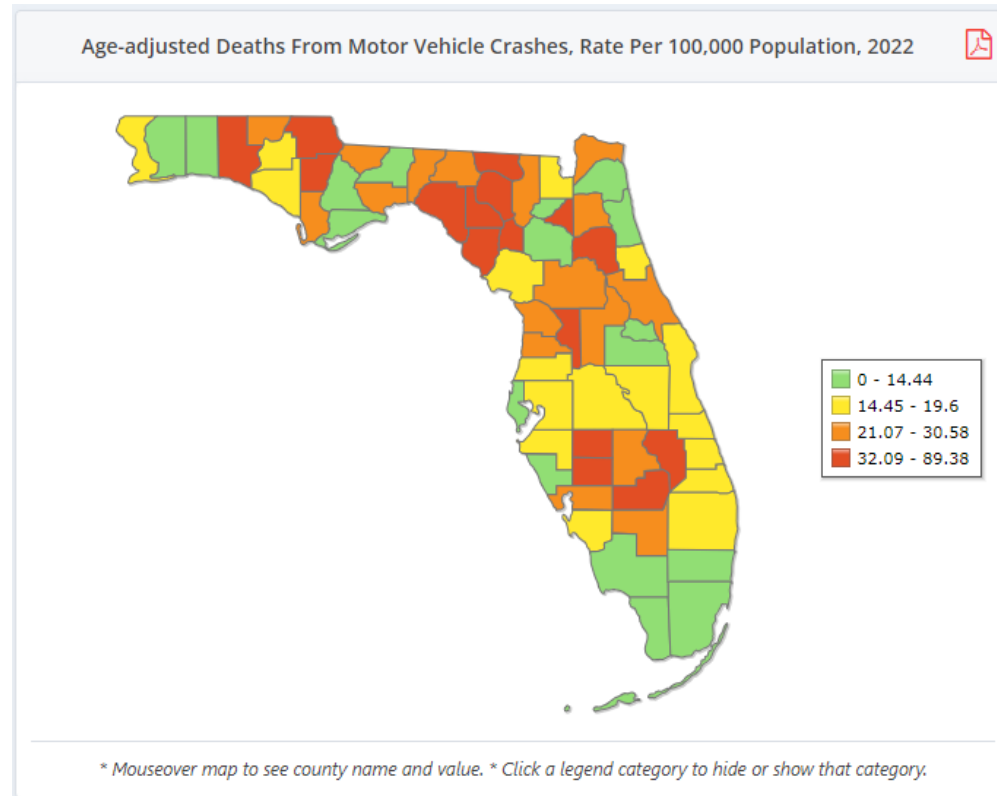
Green on a report represent favorable health situations.

Red on a report represent less favorable situations.

What if no quartile is shown?


- There is not enough data to calculate them (<51 counties)

For example:




Features of a Report: Quartiles


- A number from 1-4
 - 1 is lowest
 - 4 highest
- Sometimes, data for an indicator can not be considered more or less favorable.
- In this case we use density to show quartiles.



1st Quartile
(Lowest Density)



2nd Quartile
(Lower Density)



3rd Quartile
(Higher Density)



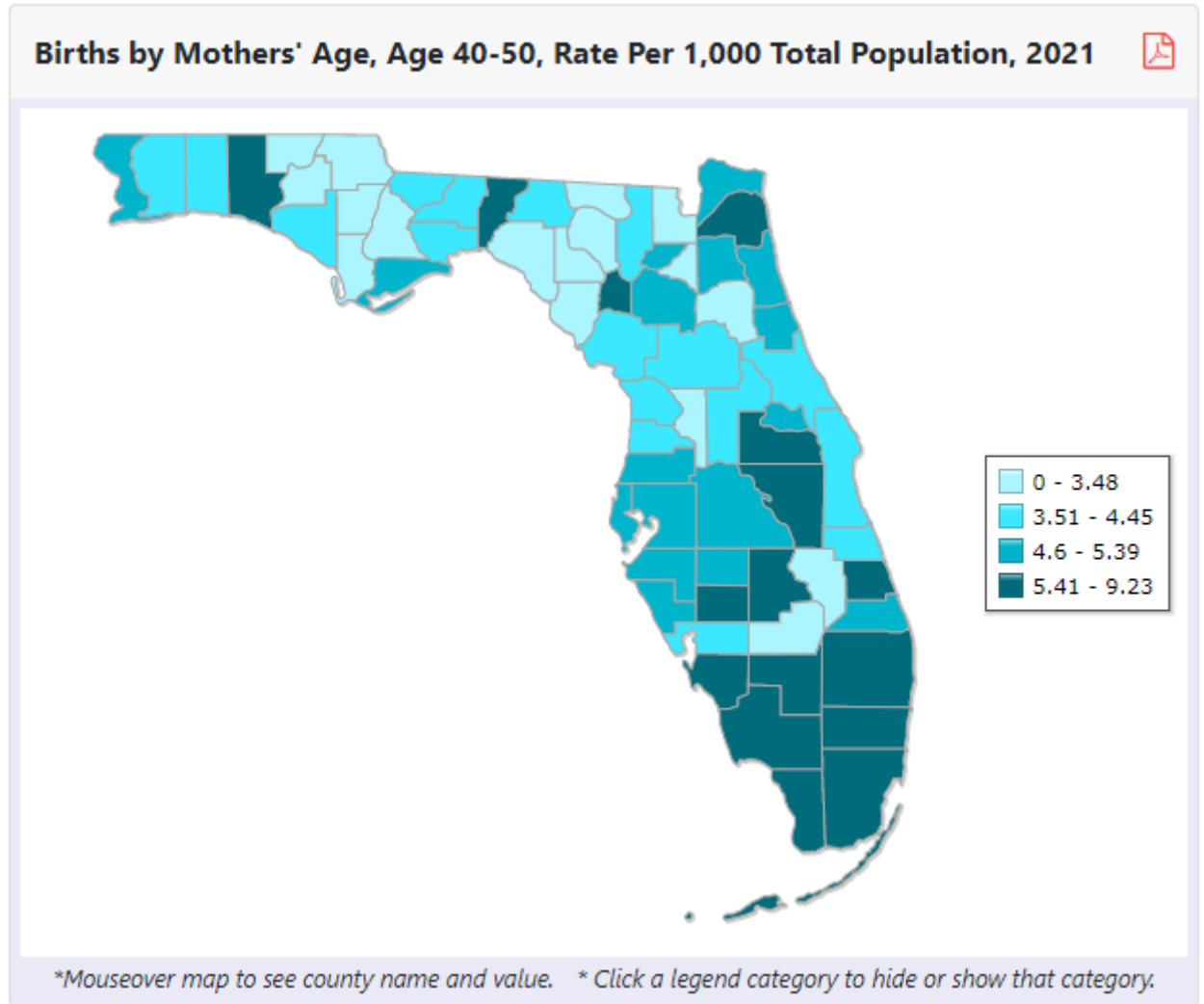
4th Quartile
(Highest Density)

Density Maps

While traditional quartile designate the favorability of an outcome, some indicators are neutral (such as population characteristics). These are shown as density quartile maps in CHARTS.

Light colored counties have a smaller quantity of an outcome, and darker counties have a higher quantity of an outcome.

In this example, women in South Florida between the ages of 40 and 50 have more births, on average, than in North Florida.



Where to Get More Data

When looking at a profile or dashboard, click on an indicator in the table to be directed to the indicator page. This will include trends, maps, and data tables about this specific indicator.

School-aged Child and Adolescent Profile

Indicator	Rate Type	Year(s)	Quartile (Most to Least Favorable)	County Number	County Rate	State Comparison
Social-emotional Development						
School Readiness at Kindergarten Entry	Percent	2022	2		48.6%	49.2%
Students in 3rd Grade With a Passing Grade on Florida Standards Assessment (FSA) English Language Arts	Percent	2022	2		50%	53%
Students Who Did Not Go to School Because They Felt They Would Be Unsafe at School or on Their Way to School in the Past 30 Days	Percent	2022	3		11.1%	10%
Students With Emotional/Behavioral Disability (Kindergarten - 12th Grade)	Percent	2022	2	91	0.3%	0.4%
Students Absent 21+ Days From School (Kindergarten - 12th Grade)						
Elementary School Students Not Promoted						
Middle School Students Not Promoted						
High School Graduation Rate						
Out of School Suspensions (Kindergarten - 12th Grade)						
School Environmental Safety Incidents						
Youths Arrested						



Elementary School Students Not Promoted

The number of kindergarten through 5th grade students who were not promoted to the next grade. Grade promotion status is defined as the change in grade assignment at the end of a regular school year or summer session. In Florida, Section 1008.25, Florida Statutes (F.S.) specifies that students must have minimum score of 3 on the statewide standardized test for Math or English Language Arts for promotion into the fourth grade. Non-promotion may indicate a need for earlier intervention services.

In 2021, the percentage of Elementary School Students Not Promoted in Alachua County was 3.1 compared to Florida at 2.5. The line graph shows change over time when there are at least three years of data. Alachua County is in the second quartile for this measure. This means that relative to other counties in Florida, there are more Elementary School Students Not Promoted in about half of the counties, and less in about one quarter of the counties. The map illustrates county data by quartile. A quartile map is presented when there are at least 51 counties with data for this measure.

Links: [Healthy People 2030](#) | [Other Resource](#)

Select Measure Type: Single Year

[View 10 Year Report](#)

ALACHUA COUNTY

County: Alachua | Year: 2021 | Count/Rate: Counts and Rates

Elementary School Students Not Promoted, Single Year

Percent (%) of Elementary School Students

Data Years: 2002 - 2021

Legend: Alachua (blue line), Florida (orange line)

FLORIDA

Year: 2021

Elementary School Students Not Promoted, Percent of Elementary School Students, 2021

Legend: 0.1 to 2.1, 2.2 to 3.1, 3.4 to 5.7, 5.9 to 12.2

*Click on county name or "Florida" in the legend to hide or show the county or state. *Mouseover map to see county name and value. *Click a legend category to hide or show that category.

Download Reports

Data within profiles and dashboards can be downloaded as a PDF or Excel.

School-aged Child and Adolescent Profile

Select County: Alachua | Select Year: 2022

School-aged Child and Adolescent Profile, Alachua County, Florida

Indicator	Rate Type	Year(s)	Quartile (Most to Least Favorable)	County Number	County Rate	State Comparison
Socio-Demographic Characteristics						
Population	Count	2022	1	290,623	2,329,178	
Population (Aged 5-11 Years)	Count	2022	2	21,024	1,723,730	
White	Count	2022	3	12,140	1,179,932	

Note: Download icons (PDF and Excel) are visible in the State Comparison column for the Population (Aged 5-11 Years) row.

Overview | Social and Community Context

Select County: Alachua | Select Year: 2022

Population Estimates, Percentage by Age Group, Alachua County, 2022

Population Estimates by Race and Ethnicity, Alachua County, 2022

Note: A download icon (PDF) is visible in the top right corner of the second chart.

Visualizations within dashboards can also be downloaded as a PDF