

Tutorial: Health Indicator Pages

Health Indicator Page

1. County and state trend graph
2. County and state trend data table
3. County quartiles for all counties for a single year
4. County data for all counties for a single year

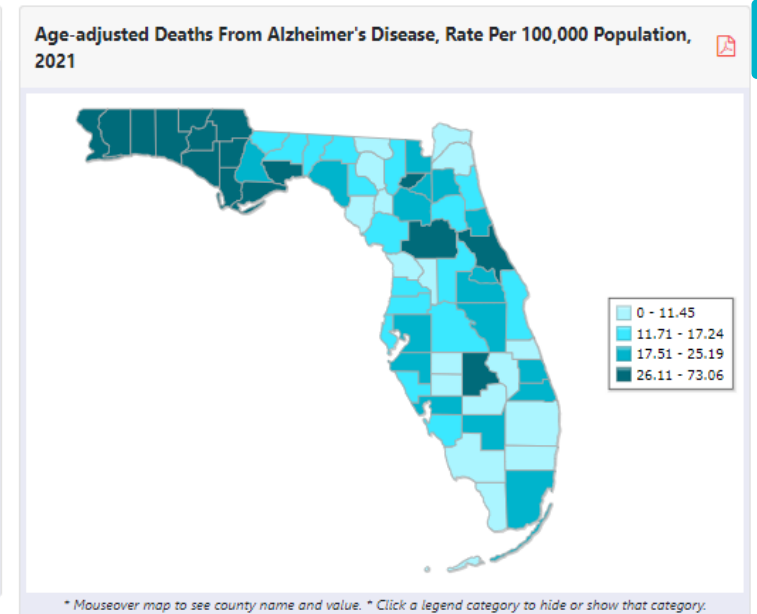
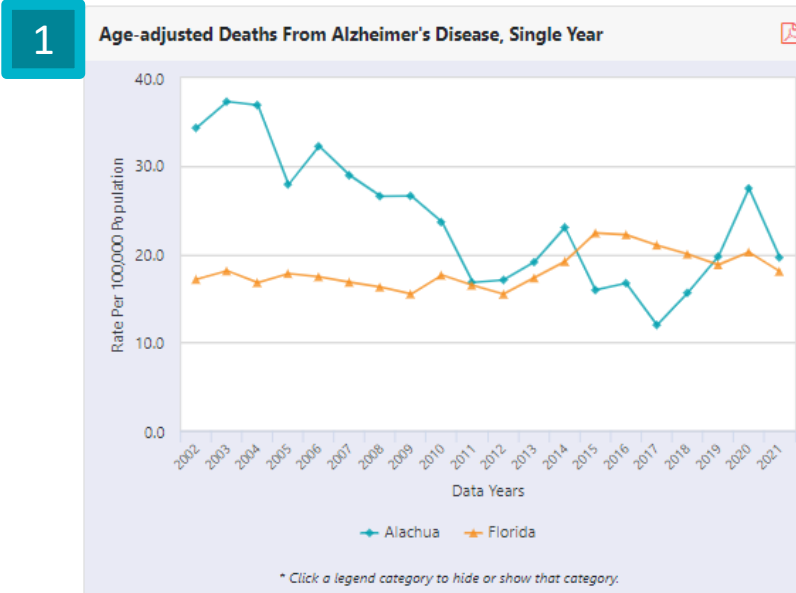
Rate Type: Measure Type: Age Range (0 to 999): [Select Ages](#)

Alachua County

County: Year: Count/Rate: Group:

Florida

Group: Year:



2 Age-adjusted Deaths From Alzheimer's Disease, Rate Per 100,000 Population, Single Year

Data Year	Alachua		Florida	
	Count	Rate	Count	Rate
2021	58	19.6	6,707	18.1
2020	77	27.5	7,264	20.3
2019	55	19.7	6,531	18.8

4 Age-adjusted Deaths From Alzheimer's Disease, Rate Per 100,000 Population, 2021

County	Count	Rate
Florida	6,707	18.1
Alachua	58	19.6
Baker	7	24.9

Selections at the top control the whole page and may vary based on data availability:

- Rate Type— crude, age-adjusted, or years of potential life lost (YPLL)
- Measure Type— single-year, 3-year discrete, or 3-year rolling
- Age Range

The screenshot shows the FLHealthCHARTS interface with a callout box highlighting the control elements for both the Alachua County and Florida views. The callout box contains the following controls:

- Rate Type:** Age-adjusted
- Measure Type:** Single Year
- Age Range (0 to 999):** Select Ages

The interface also includes buttons for "View 10 Year Report" and "View Monthly Data".

Alachua County View:

County: Alachua, Year: 2021, Count/Rate: Counts and Ra..., Group: All

Florida View:

Group: All, Year: 2021

Alachua County Data (Line Chart):

Age-adjusted Deaths From Alzheimer's Disease, Single Year

Year	Alachua Rate	Florida Rate
2002	~3.5	~3.5
2003	~3.8	~3.8
2004	~3.8	~3.8
2005	~3.5	~3.5
2006	~3.2	~3.2
2007	~3.5	~3.5
2008	~3.2	~3.2
2009	~3.0	~3.0
2010	~3.0	~3.0
2011	~3.0	~3.0
2012	~3.0	~3.0
2013	~3.0	~3.0
2014	~3.0	~3.0
2015	~3.0	~3.0
2016	~3.0	~3.0
2017	~3.0	~3.0
2018	~3.0	~3.0
2019	~3.0	~3.0
2020	~3.0	~3.0
2021	~3.0	~3.0

Florida View (Map):

Age-adjusted Deaths From Alzheimer's Disease, Rate Per 100,000 Population, 2021

Legend:

- 0 - 11.45
- 11.71 - 17.24
- 17.51 - 25.19
- 26.11 - 73.06

Alachua County Data Table:

Age-adjusted Deaths From Alzheimer's Disease, Rate Per 100,000 Population, Single Year

Data Year	Alachua		Florida	
	Count	Rate	Count	Rate
2021	58	19.6	6,707	18.1
2020	77	27.5	7,264	20.3
2019	55	19.7	6,531	18.8

Florida Data Table:

Age-adjusted Deaths From Alzheimer's Disease, Rate Per 100,000 Population, 2021

County	Count	Rate
Florida	6,707	18.1
Alachua	58	19.6
Baker	7	24.9

Additional data are available for birth and death indicators.

- Monthly Data— provides the most recent 36 months of data
- 10-Year Report

Rate Type: Age-adjusted

Measure Type: Single Year

Age Range (0 to 999): Select Ages

[View 10 Year Report](#)

[View Monthly Data](#)

Alachua County

County: Alachua | Year: 2021 | Count/Rate: Count and Ra... | Group: All

Age-adjusted Deaths From Alzheimer's Disease, Single Year

* Click a legend category to hide or show that category.

Florida

Group: All | Year: 2021

Age-adjusted Deaths From Alzheimer's Disease, Rate Per 100,000 Population, 2021

* Mouseover map to see county name and value. * Click a legend category to hide or show that category.

View 10 Year Report

View Monthly Data

Age-adjusted Deaths From Alzheimer's Disease, Rate Per 100,000 Population, Single Year

	Alachua		Florida	
Data Year	Count	Rate	Count	Rate
2021	58	19.6	6,707	18.1
2020	77	27.5	7,264	20.3
2019	55	19.7	6,531	18.8

Age-adjusted Deaths From Alzheimer's Disease, Rate Per 100,000 Population, 2021

County	Count	Rate
Florida	6,707	18.1
Alachua	58	19.6
Baker	7	24.9

Left Panel Selections

Left panel selections affect the entire left side of the page and may vary based on data availability.

- County
- Year
- Count/Rate— display counts and rates, counts only, or rates only
- Group— shows race/ethnicity, gender, and other options depending on the indicator selected

The screenshot displays the FLHealthCHARTS interface for 'Age-adjusted Deaths From Alzheimer's Disease, Single Year'. The top navigation bar includes filters for Rate Type (Age-adjusted), Measure Type (Single Year), Age Range (0 to 999), and buttons for 'View 10 Year Report' and 'View Monthly Data'. The main content is split into two panels: 'Alachua County' on the left and 'Florida' on the right. Both panels show a line chart and a map. A callout box highlights the 'Alachua County' filter options, which include County (Alachua), Year (2021), Count/Rate (Counts and Ra...), and Group (All). Below the charts are two data tables. The left table compares Alachua County and Florida from 2019 to 2021, showing counts and rates. The right table shows data for Florida, Alachua, and Baker counties for 2021.

Data Year	Alachua		Florida	
	Count	Rate	Count	Rate
2021	58	19.6	6,707	18.1
2020	77	27.5	7,264	20.3
2019	55	19.7	6,531	18.8

County	Count	Rate
Florida	6,707	18.1
Alachua	58	19.6
Baker	7	24.9

Right Panel Selections

Right panel selections affect the right side of the page and may vary based on data availability.

- Group— shows race/ethnicity and gender options
- Year

Rate Type: Age-adjusted

Measure Type: Single Year

Age Range (0 to 999): Select Ages

[View 10 Year Report](#)

[View Monthly Data](#)

Alachua County

County: Alachua | Year: 2021 | Count/Rate: Counts and Ra... | Group: All

Age-adjusted Deaths From Alzheimer's Disease, Single Year

* Click a legend category to hide or show that category.

Florida

Group: All | Year: 2021

Age-adjusted Deaths From Alzheimer's Disease, Rate Per 100,000 Population, 2021

* Mouseover map to see county name and value. * Click a legend category to hide or show that category.

Age-adjusted Deaths From Alzheimer's Disease, Rate Per 100,000 Population, Single Year

Data Year	Alachua		Florida	
	Count	Rate	Count	Rate
2021	58	19.6	6,707	18.1
2020	77	27.5	7,264	20.3
2019	55	19.7	6,531	18.8

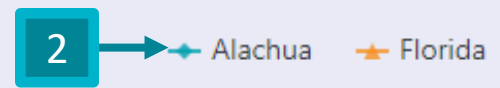
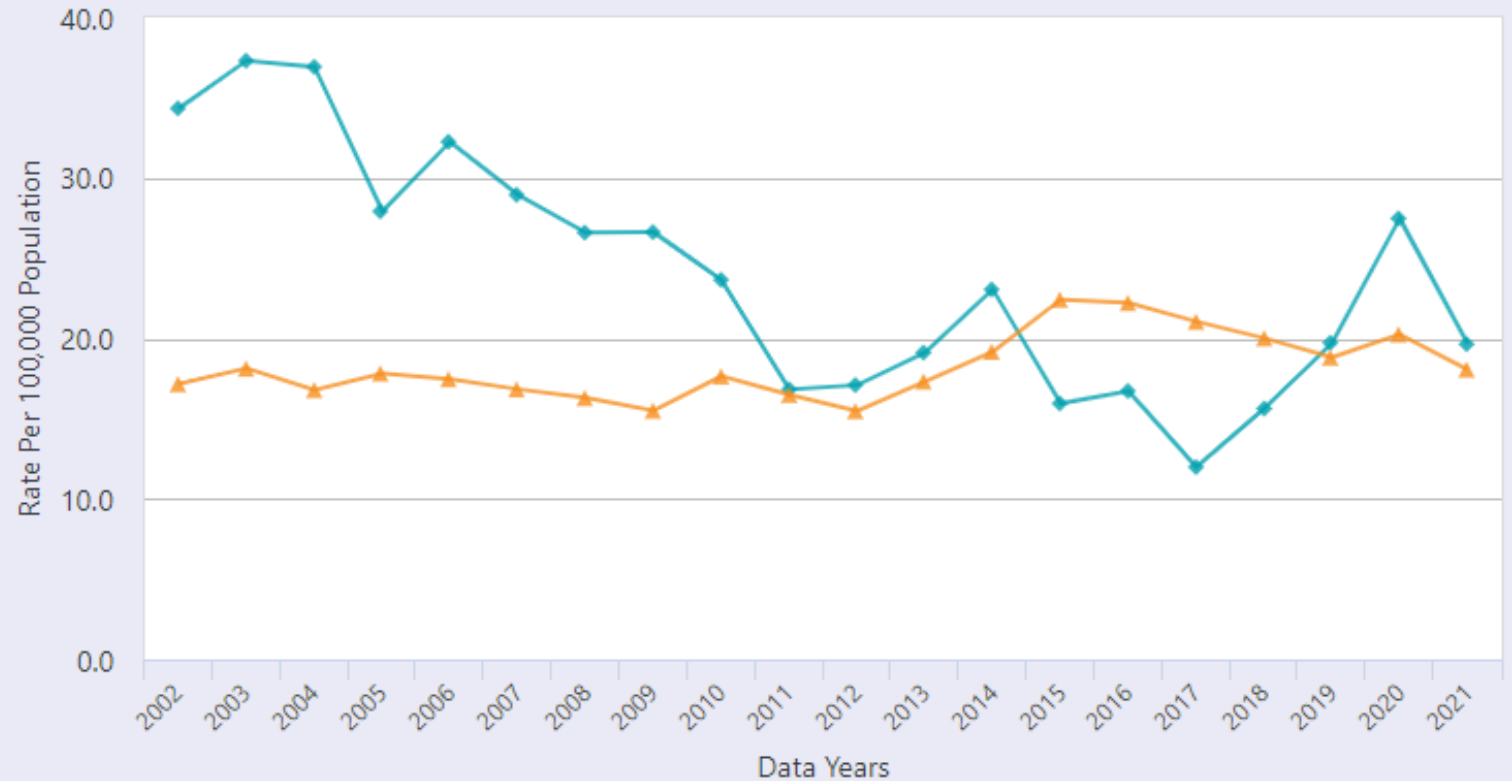
Age-adjusted Deaths From Alzheimer's Disease, Rate Per 100,000 Population, 2021

County	Count	Rate
Florida	6,707	18.1
Alachua	58	19.6
Baker	7	24.9

Trend Graph Features

1. Export the graph to a PDF to save or print.
2. Show or hide a trend line by clicking the display names below the graph.

Age-adjusted Deaths From Alzheimer's Disease, Single Year



* Click a legend category to hide or show that category.

Trend Data Table Features

Export the table to a PDF to print or save.

Export the table to Excel.

Age-adjusted Deaths From Alzheimer's Disease, Rate Per 100,000 Population, Single Year

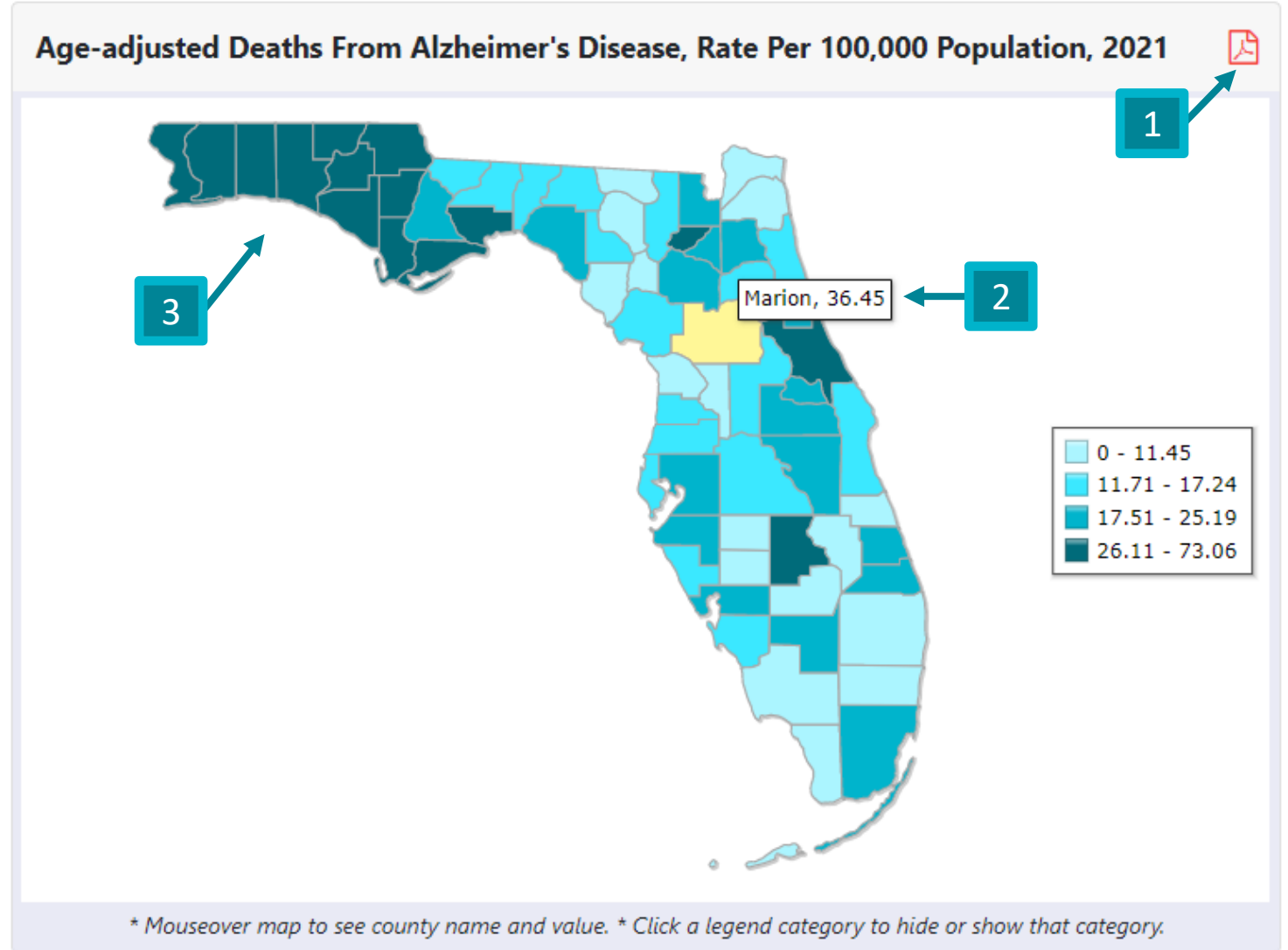


Data Year	Alachua		Florida	
	Count	Rate	Count	Rate
2021	58	19.6	6,707	18.1
2020	77	27.5	7,264	20.3
2019			6,531	18.8
2018			6,711	20.0
2017			6,956	21.0
2016			7,152	22.2
2015			7,021	22.4
2014			5,814	19.2
2013	47	19.1	5,064	17.3
2012	38	17.1	4,379	15.5
2011	39	16.8	4,470	16.5
2010	52	23.6	4,776	17.6
2009	58	26.6	4,613	15.5
2008	58	26.6	4,724	16.3
2007	58	28.9	4,632	16.8



Quartile Map Features

1. Export the map to PDF to print or save.
2. Move your mouse over any county to see its numeric value.
3. Areas on the map with the darkest color have the least favorable data (4th quartile), and the areas with the lightest color have the most favorable data (1st quartile).





Single-Year Data Table Features

MOV displays a graph comparing the measure of variability (MOV) for both county and state rates.



Note: This option is only available when viewing crude rates.

Export the data table to PDF to print or save.

Export the data to Excel.

Deaths From Alzheimer's Disease, Rate Per 100,000 Population, 2021 MOV  

County	Count	Denom	Rate	MOV
Florida	6,707	22,005,587	30.5	0.7
Alachua	58	275,435	21.1*	5.4
Baker	7	28,790	24.3	18.0
Bay	132	176,851	74.6*	12.7
Bradford			31.2	20.4
Brevard			30.2	4.3
Broward			16.0*	1.8
Calhoun			75.2*	44.4
Charlotte	132	194,001	68.0*	11.6
Citrus	40	151,102	26.5	8.2
Clay	43	224,503	19.2*	5.7
Collier	101	398,696	25.3*	4.9
Columbia	12	70,869	16.9*	9.6
Miami-Dade	1,037	2,860,584	36.3*	2.2
Desoto	7	37,941	18.4	13.7
Dixie	0	16,716	0.0	

MOV  

Data Notes

See the data source and notes specific to the indicator at the bottom of the page.

Data Note(s)

3/15/2023 3:26:39 PM

FLHealthCharts.gov is provided by the Florida Department of Health, Division of Public Health Statistics and Performance Management.

Data Source: Florida Department of Health, Bureau of Vital Statistics

ICD-10 Code(s): G30

Chart will display if there are at least three years of data.

Multi-year counts are a sum of the selected years, not an average.

Use caution when interpreting rates and ratios based on small numbers of events. Rates and ratios are considered unstable if they are based on fewer than 5 cases or if the denominator (population at risk) is fewer than 20. An erratic trend line illustrates this instability.

Quartiles are calculated when data are available for at least 51 counties.

Population - Rates are calculated using July 1 population estimates from the Florida Legislature, Office of Economic and Demographic Research which have been allocated by race based on information from the US Bureau of the Census. The population data for 2011-2021, along with rates affected by the population data, was updated on FLHealthCHARTS in November 2017. It is customary to periodically revise population estimates based on new information, such as a census or new mid-course census estimates for prior years. Revising these estimates ensures accurate accounting of the racial, ethnic, and gender distribution of the population. These changes affect the population data and rates calculated for your community.

When rates are per 100,000 population they are calculated using population estimates provided by the Florida Legislature, Office of Economic and Demographic Research. All age-adjusted rates utilize the Year 2000 Standard Population Proportion.

Data for 1970-78, 1979-98, and 1999-present are not fully comparable due to changes in coding causes of death. Consequently, increases or decreases in 1979 and 1999 may not be due to changes in disease trends but rather coding changes. Starting with 2003 deaths, the sum of the deaths from all counties will not equal the total number of resident deaths due to an unknown county of residence on some records.

MOV - Measure of Variability: Probable range of values resulting from random fluctuations in the number of events. Not calculated when numerator is below 5 or denominator is below 20, or count or rate is suppressed. The MOV is useful for comparing rates to a goal or standard. For example, if the absolute difference between the county rate and the statewide rate is less than the MOV, the county rate is not significantly different from the statewide rate (alpha level = 0.05). When the absolute difference between the county rate and the statewide rate is greater than the MOV, the county rate is significantly different from the statewide rate. MOV should not be used to determine if the rates of two different counties, or the county rates for two different years, are statistically significantly different.

denom - abbreviated for Denominator.

Population estimates are not available for persons whose county of residence is unknown. Given this, the denominator and associated rate are not available.

* - Indicates the county rate is statistically significantly different from the statewide rate.

Deaths are reported based on single underlying cause of death unless stated otherwise.

This is primary, quantitative data.

